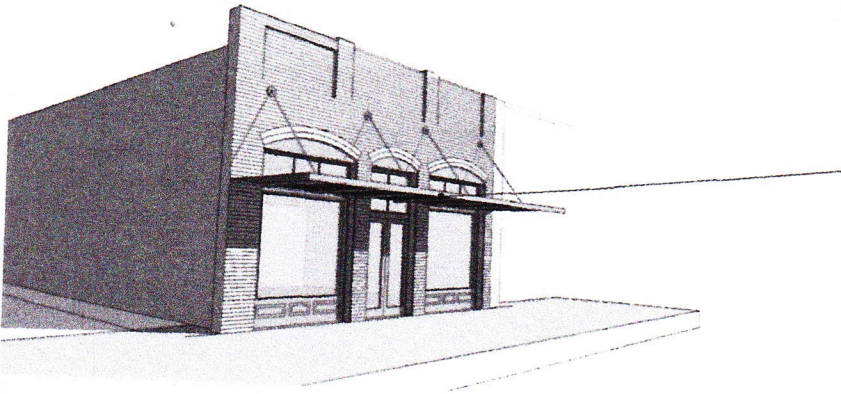


112 DEPOT ST.

The top drawing is of the entry on the Depot St. commercial space with the existing door and transom.

The second drawing is the previously proposed alley entrance to the residence in the back of the building.

The change requested is for the alley entrance to the residence. The change would be to echo the front entrance in the back by building a transom over two 6'8" full glass doors spanning the existing space in width of 84" and transoms to fill the remaining space above the doors to the height of 8'1". Therefore, both entrances would look the same as the top drawing. The entirety of the alley opening would be utilized and not filled in with any material other than what is used in the doors and transom. The materials to be used in construction are glass and wood only.



04 Exterior Perspectives @ Depot Street  
SCALE: NTS

