

YOU ARE RESPONSIBLE FOR SOCIAL DISTANCING AT CHURCH

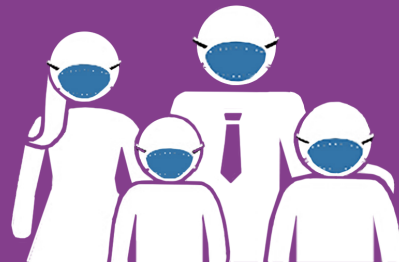
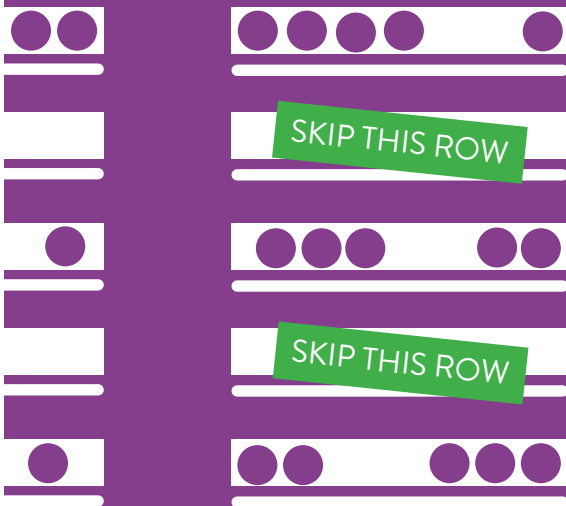


STAY 6 FEET APART
from other households

IN THE SANCTUARY
Follow directions on seating
and exiting the church



**WAVE & SMILE
TO SHOW YOUR LOVE**
(Do not hug others)



**FACE COVERINGS
ARE RECOMMENDED**

LET'S KEEP OUR CHURCH FAMILY HEALTHY